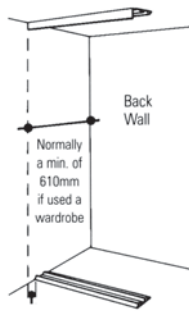


**1 Sizing Tracks**

Measure the width of the top of your opening. Using a set square mark a straight line across the Top Track A. Measure the width of the base of your opening. Mark a corresponding line across the Bottom Track B. Then cut the tracks using a fine tooth hacksaw.



**2 Installing Tracks**

**Top Track** - Position Track into the top of the opening. Drill and plug the header/ceiling as required and fix Top Track ( See overleaf for suggestions).  
**Floor Track** - Position the Track 32mm back from the front line of Top Track. Fix the Floor Track using double sided tape or screws.  
**IMPORTANT**- Floor track should never be raised on a plinth as this could lead to doors leaving the tracks.



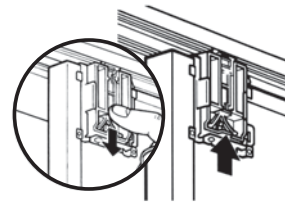
**3 Positioning Doors**

**Tip**- If installing Panel doors in combination with Mirror Doors it is usual to locate the Panel Doors to the back and Mirror Doors to the front of the track.



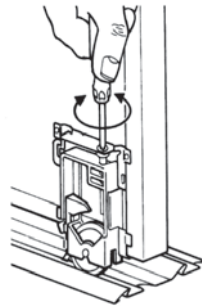
**4 Installing Doors**

Always locate the back door first. Install doors with the bottom of the door slanting out at 15°. Lower bottom wheels into bottom track before engaging top guides.



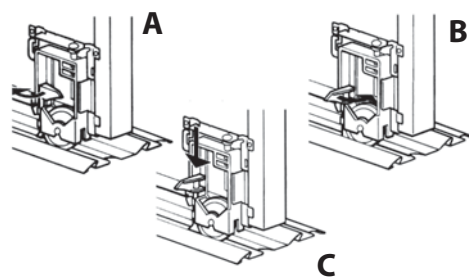
**5 Engaging Top Guide**

Push up white plastic section of the guide to engage into top track. To remove door from top track pull down on top guide as shown. Guide will then disengage from top track. Lift out a 15° angle.



**6 Adjusting Doors**

Align doors plumb to side walls. Adjust bottom wheels to alter the height and angle of each door. Using a pozidrive screwdriver, correct door alignment with screw adjuster attached to bottom wheel. Turn the screw clockwise to lower the door and anti-clockwise to raise the door. Plumb doors to adjacent walls and other doors by adjusting both left and right wheels up and down as required.



**7 Engaging Anti-jump Clips**

Clips must be engaged to ensure doors do not leave tracks.

**A** Rotate anti-jump clip into open position

**B** Push antijump clip fully down into track

**C** Rotate Anti-jump clip back into closed position

To disengage anti-jump clip-reverse procedure. (In the unlikely event of anti-jump clip becoming detached during engagement, simply snap it back into original position shown on drawing A).