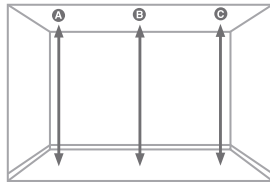


## MEASURING UP FOR STANDARD SLIDING DOORS.



Measure your ceiling height at three points along the length of the ceiling  
(Minimum ceiling height 2260mm)

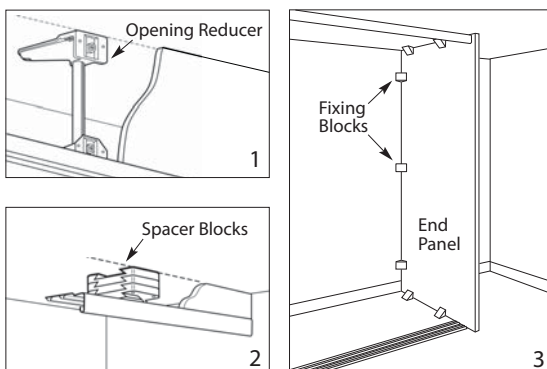


Next measure the width of the opening.

OPENING WIDTH	NUMBER OF DOORS REQUIRED	DOOR SIZE REQUIRED
1193mm (47")	X2	610mm (24")
1778mm (70")	X3	610mm (24")
2387mm (94")	X4	610mm (24")
1498mm (59")	X2	762mm (30")
2235mm (88")	X3	762mm (30")
2997mm (118")	X4	762mm (30")
1803mm (71")	X2	914mm (36")
2692mm (106")	X3	914mm (36")
3607mm (142")	X4	914mm (36")

All doors in the standard door range are 2220mm tall and fit an opening height of 2260mm (89"). They are available in 3 widths; 610mm, 762mm and 914mm. The number of doors needed will depend on your opening width. (See table for guidelines)

Your sliding doors will come with detailed instructions on how to install. But please do remember that you will do need to get the track set separately depending on which retailer you purchase your doors from, but these too come with detailed instructions on how to install.



All sliding doors fit a ceiling height of 2260mm as standard but if you need to reduce the gap between your ceiling and the top of the door, don't worry as there are a number of options.

### 1. Opening height reducer

This neat accessory enables the gap between the top of the wardrobe and the ceiling to be bridged by as much as 460mm. It adjusts from a minimum of 130mm, allowing doors to fit opening heights of 2720mm.

### 2. Spacer blocks

Another way of bridging the gap is to use spacer blocks - if the ceiling height is between 2272 and 2399mm (89 1/2 and 94 1/2 inches) then these blocks can be used to bring the height down to the 2260mm required.

If your not able to fit wall-to-wall.

If you can't fit sliding doors into an enclosed area then you will need to create a false end, which can be purchased in store - please ask for details.

### 3. Fixing blocks

Fixing blocks can be used to help you create a false end using plasterboard, mdf or a colour matched décor panel